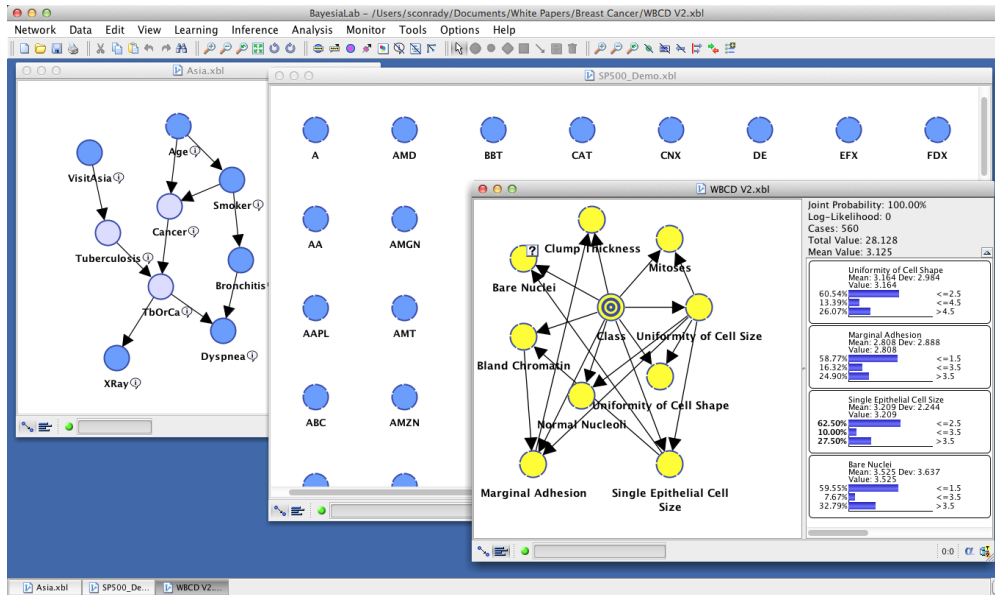


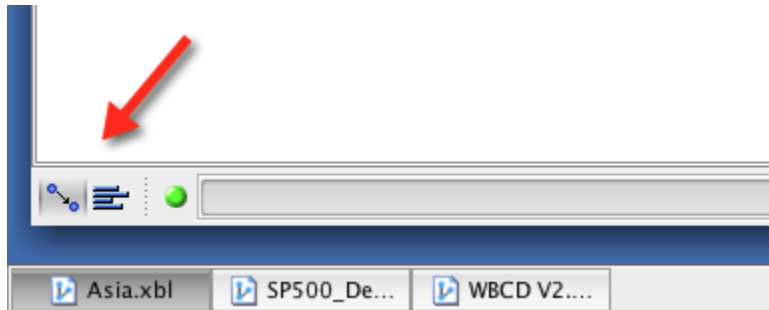
# Graph Windows

Each **Graph Window** represents a distinct entity, consisting of both qualitative and quantitative information.

- **Qualitative:** i.e. the structure of the graph (**Nodes and Arcs**).
- **Quantitative:** i.e. **Conditional Probability Tables** and, if available, any associated dataset.



A **Graph Window** can be in two different modes, as indicated by two buttons in the lower lefthand corner of each **Graph Window**.



You can switch between modes by clicking on the respective buttons.

- **Modeling Mode:** in this mode all learning and modeling tasks take place. Only the **Graph Panel** is visible.
- **Validation Mode:** in this mode both the **Graph Panel** and the **Monitor Panel** are visible. Model validation, analysis, simulation, etc. are performed exclusively in this mode.